

# MFA in Theatre Management & Producing at Columbia University

2025 Info Session and Q&A



Class of 2018



Class of 2024

# COLUMBIA UNIVERSITY SCHOOL OF THE ARTS | THEATRE

THE OSCAR HAMMERSTEIN II CENTER FOR THEATRE STUDIES

## Theatre Management & Producing Leadership Team

**Victoria Bailey**

Associate Professor

Theatre Management & Producing  
Concentration Advisor



Consultant/  
Facilitator/Educator  
Arts Professional

**Steven Chaikelson**

Professor

Theatre Management & Producing  
Concentration Director



President  
Producer and General Manager  
Snug Harbor Productions

**Christina Selby**

Internship Coordinator and Advisor

Theatre Management & Producing  
Concentration Advisor



Vice President  
Production & Touring  
Nederlander Organization

**COLUMBIA  
UNIVERSITY  
SCHOOL OF THE  
ARTS**

Dodge Hall – 116<sup>th</sup> Street  
and Broadway

- Film
- Theatre
- Writing
- Visual Arts



# Theatre Program

The Oscar Hammerstein II  
Center for Theatre Studies

Offering MFA Degrees in:

- Acting
- Directing
- Dramaturgy
- Playwriting
- Stage Management
- Theatre  
Management &  
Producing
- Joint JD/MFA with  
Columbia Law  
School



# Why an MFA?

- The Big Picture and In-Depth Study
- Expand Your Toolkit
- Colleagues
- Networking
- Teaching
- Inspiration



Class of 2017 at the Shubert Archive

# Why Columbia?

- Individualized Program
- Academic Studies and Professional Engagement
- Commercial and Not-for-Profit
- Management/Administration and Producing/Entrepreneurship
- Building Skills and Tackling Industry Issues
- Past, Present and Future: Industry History, Best Practices and New Frontiers
- National and International



Class of 2024 at our annual cocktail party



Class of 2024 and 2025 observing the load-in of *Here Lies Love* at the Broadway Theatre

# Theatre Management & Producing Program Summary

- 8-10 Students per year
- 3 Year Program: 2 years of classes and 1 thesis year
- 60 Credits over the first 2 years / 4 semesters
- Producing/Management Requirements
- Collaboration Intensive and Collaboration Studio Projects
- Company Management / Crew Assignment
- 3 “Internships”
- Free Tickets!
- Thesis



Class of 2027 at the Minskoff Theatre



Class of 2026 at the Hudson Theatre

# Adjunct Faculty – Working Professionals



Gigi Bolt



Chris Boneau



Chris Burney



Carolyn Casselman



Ellen Dennis



Whitney Estrin



Nick Falzon



Charles Flateman



Robert Fried



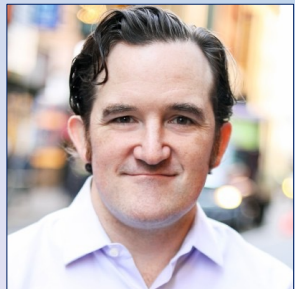
Sue Frost



Adam Hess



Kiah Jones



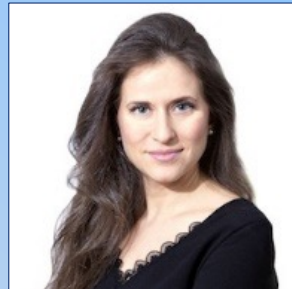
Justin Karr



Stacey McMath



Michael Naumann



Amanda Pekoe



Darren Robertson



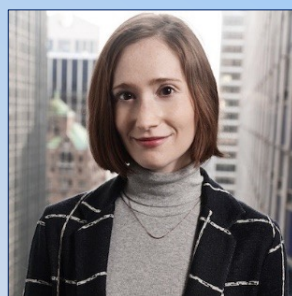
Karen Robinson



Christina Selby



Kimberly Shaw



Rachel Sussman



Donna Walker-Kuhne

# Students

## Diverse Backgrounds and Experiences



- Columbia University:
  - One of the largest international student populations in the USA
- School of the Arts:
  - 32% of the student body is international
  - Students from 58 countries
- Theatre Management & Producing
  - 40% of the current student body is international

# Columbia Facilities

## Morningside Campus

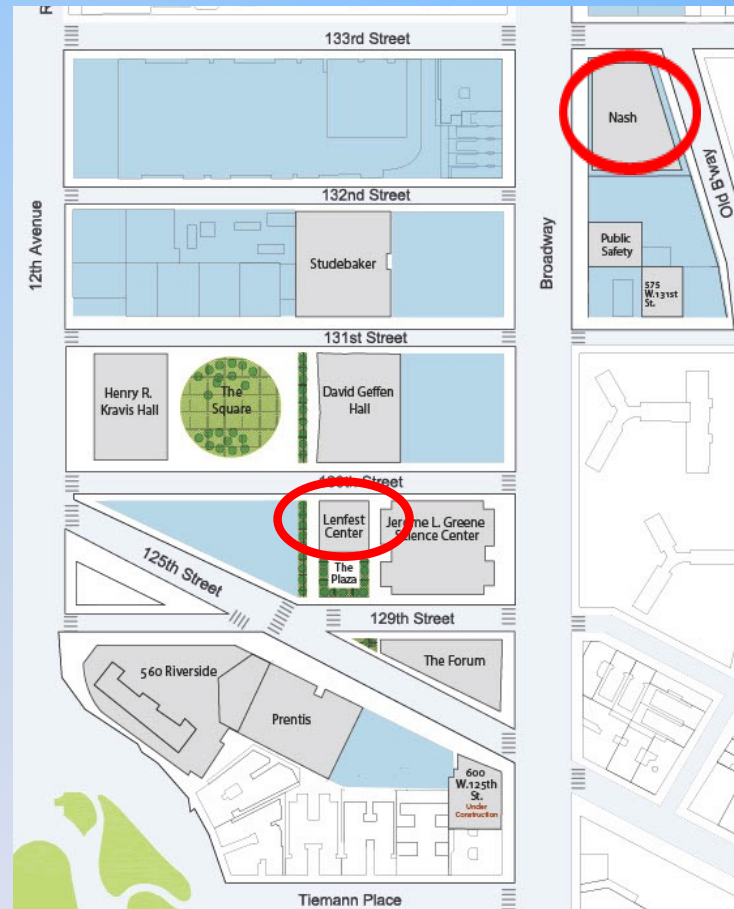
- Dodge Hall (116<sup>th</sup> Street)
- Columbia Law School (116<sup>th</sup> Street)
- Schapiro Theatre and Studio (115<sup>th</sup> Street)
- Teachers College (120<sup>th</sup> Street)
- Riverside Church (121<sup>st</sup> Street)



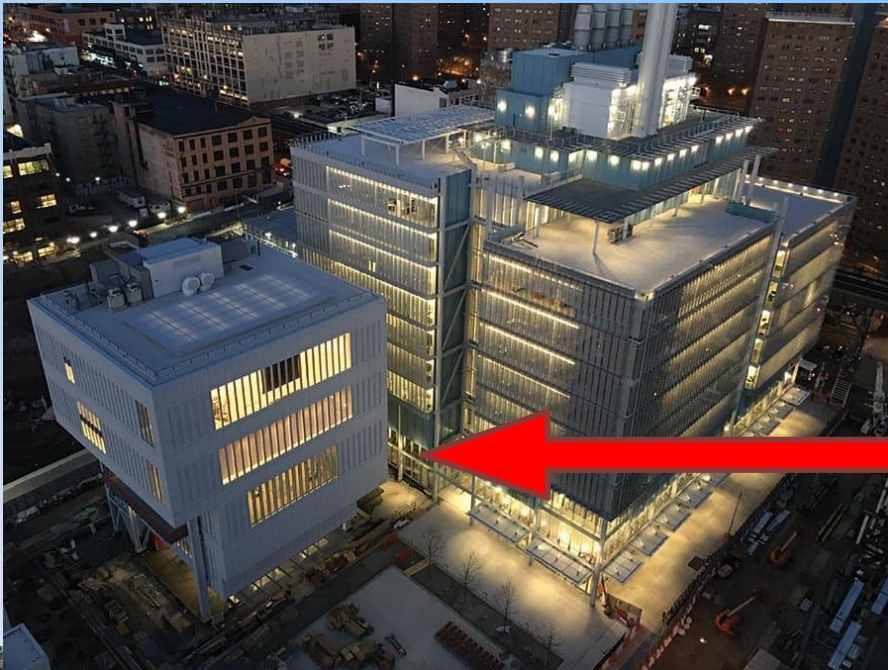
# Columbia Facilities

## Manhattanville Campus

- Lenfest Center for the Arts (129<sup>th</sup> Street)
- Nash Studios/Production Resources (133<sup>rd</sup> Street)



# Manhattanville and the Lenfest Center for the Arts



# New York City is your classroom



Class of 2018 – Field Trip/Theatre Tour

# Areas of Study

- Accounting and Finance
- Budgeting
- Contracts
- Creative Development
- Equity, Diversity, Inclusion and Accessibility
- Fundraising and Development
- History and Theory
- International Production
- Human Resources and Labor Relations
- Management and Administration
- Marketing and Audience Development



Theatre Management & Producing Faculty

# TM&P Courses

## First Year

- Theatre Management & Administration I and II
- Budgeting and Reporting
- Marketing Tools and Audience Development
- Advertising for the Theatre
- Press and Publicity
- History and Theory of Theatre
- Issues in the National Not-for-Profit Theatre
- Critical Issues in Theatre Producing: Diversity, Equity and Inclusion in the Arts
- Seminar in Law & Theatre (at Columbia Law School)
- Legal Writing Practicum
- Labor Relations & Collective Bargaining
- **New!** Collaboration Intensive

## Second Year

- The Development Process
- Advanced Seminar in Theatre Management
- Accounting for the Theatre
- Theatre Practicum: Ticketing
- International Touring and Festivals
- Not-for-Profit Producing Partnerships
- Company Management
- The Role of the Producer I and II
- Creative Producing
- Digital Producing
- Reimagining American Theatre
- Critical Issues in Theatre Management: Human Resources
- **New!** Public Sector Policy
- **New!** Unpacking the US Resident Theatre
- **New!** Collaboration Studio

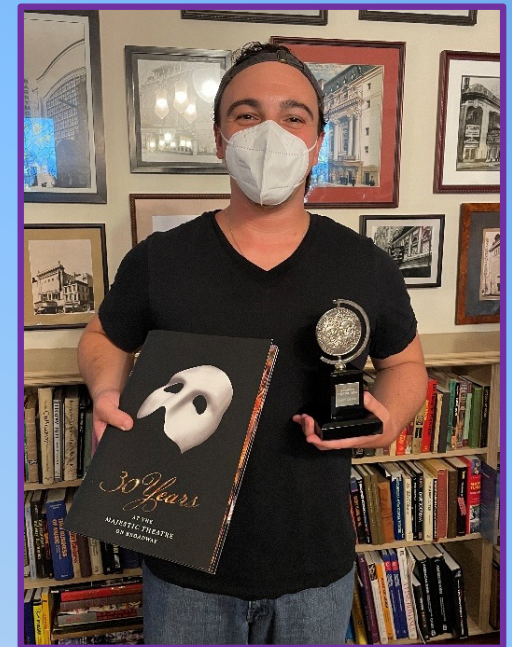
# Electives

- MFA Theatre Program
- MFA Film Program
- Arts Administration at Teachers College
- Columbia Business School
- Columbia School of Law
- Other Areas of the University

Note that courses outside of the Theatre Program are subject to availability from semester to semester.



Class of 2023 at the Shubert Archive



# Collaboration

- Collaboration Intensive and Collaboration Studio Projects
- Classroom Projects
- Second Year Productions in Schapiro Theatre and Schapiro Studio
- Third Year Mainstage Productions and Festivals at Lenfest Center for the Arts
- Digital Storytelling Lab
- Extracurricular productions on and off campus



COLUMBIA  
UNIVERSITY  
SCHOOL OF THE  
ARTS

Digital  
Storytelling  
Lab

Exploring  
new forms  
& functions of  
storytelling

# Columbia University / Stage One Exchange Program

- 1 Week NYC/London Exchange
- Learn about different business practices
- Build relationships



# STAGE ONE



# Internships

a selection of companies where students recently interned

- 101 Productions
- 321 General Management
- Ars Nova
- Barrington Stage Company
- Bespoke Theatricals
- Boneau/Bryan Brown
- Broadway Across America
- Broadway Asia
- Broadway and Beyond Theatricals
- Broadway Brands/Broadway Briefing
- Broadway Licensing
- Brooklyn Academy of Music
- Daryl Roth Theatrical Management
- Disney Theatrical Group
- En Garde Arts
- Joey Parnes Productions
- Junkyard Dog Productions
- La Jolla Playhouse
- League of Livestream Theatre
- Lincoln Center for the Performing Arts
- Manhattan Theatre Club
- Marathon Digital
- Maximum Entertainment
- MCC Theatre
- Michael Moore Agency
- Mott/Fischer Productions
- Nederlander Theatrical
- New York Theatre Workshop
- Off-Broadway League



Students and Alumni on the job at 101 Productions

- P3 Productions
- Perelman Arts Center
- Playwrights Horizons
- RCI Theatricals
- Signature Theatre
- TBD Theatricals
- Tectonic Theatre
- Thompson Turner Productions
- Theatre Development Fund (TDF)
- The Broadway League
- The New Group
- The Pekoe Group
- The Play Company
- The Shubert Organization
- The Vineyard Theatre
- Vivacity Media
- Webb Management
- Williamstown Theatre Festival

# Thesis

- 3<sup>rd</sup> Year
- 50-100 Pages
- Make an Argument
- Interviews
- Faculty and Outside Advisors

# JD/MFA

Complete the JD and MFA in Theatre Management & Producing in 4-5 years.

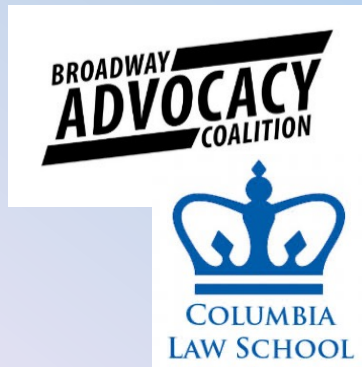
- 4 years of fulltime study:
  - 5 semesters at Columbia Law School (CLS)
  - 3 semesters in the School of the Arts (SOA)
- Start the program in either CLS or SOA
- Thesis in Year 4 while taking classes OR in Year 5
- Applicants apply separately to each school



# Industry Partnerships



Producing Fellows selected through our **Prince Fellowship** and **The Theatre Leadership Project** take classes with the producing students. Recent fellowship projects include *How to Dance in Ohio* and *Suffs*, both of which were produced on Broadway in the 2023-2024 season by fellowship alumni. Recent and upcoming Prince Fellowship projects Off-Broadway include *Trophy Boys* at MCC Theatre and *Bigfoot* at Manhattan Theatre Club.

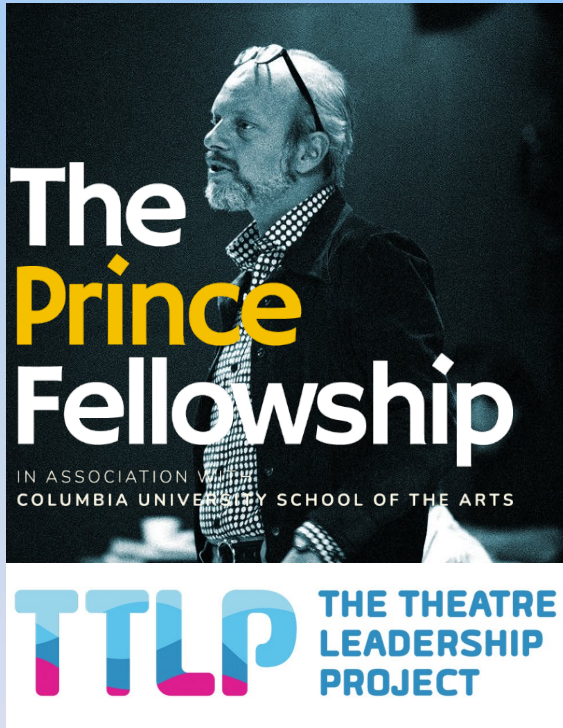


Producing students have the option to enroll in the seminar entitled ***Theater of Change: Reimagining Justice Through Abolition***, in partnership with Columbia Law School and Broadway Advocacy Coalition



Through our collaboration with **Stage One** and the **Society of London Theatre**, second year students spend a week in London in the spring immersed in the theatre community and learning about UK producing models. The London trip is fully funded and covers airfare, accommodations, airport transfers and theatre tickets. We also host a group of UK producers in New York City for one week in the fall.

# Prince Fellowship for Creative Producers

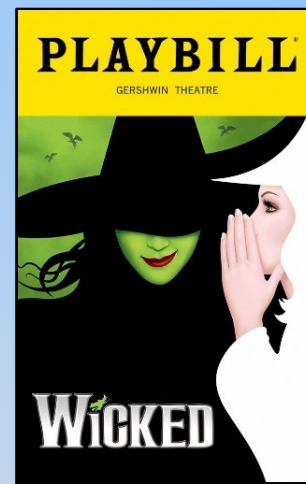
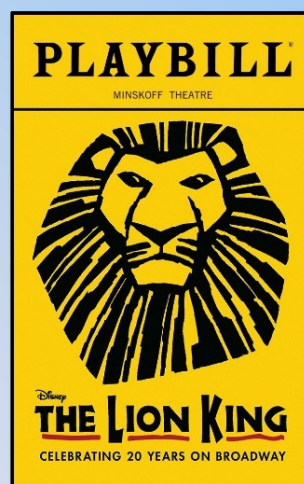
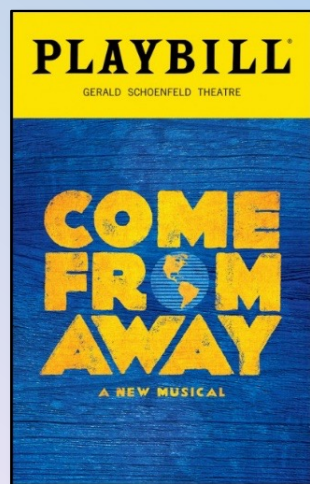


## Mentors

Kristin Caskey  
Sue Frost  
Thomas Schumacher  
David Stone  
Orin Wolf

## 2025-2026 Fellows

Giuliana Carullo  
Miranda Gohh



# Financial Aid

- Fellowships for Years 1 and 2 generally range from \$10,000 to \$50,000 per year
- Whitman Fellowship covers full tuition for Years 1 and 2
- Additional opportunities for student service positions
- Shubert Internship Stipend in Year 3

# Admissions

- Application Materials:

- Transcript
- No GRE or other testing required
- 3 Letters of Recommendation
- 2 Essays: Personal Statement and Statement of Objectives
- Creative Materials (Portfolio or Play Analysis)
- Application Deadline: **January 6, 2026**
- Admissions Committee and Interviews

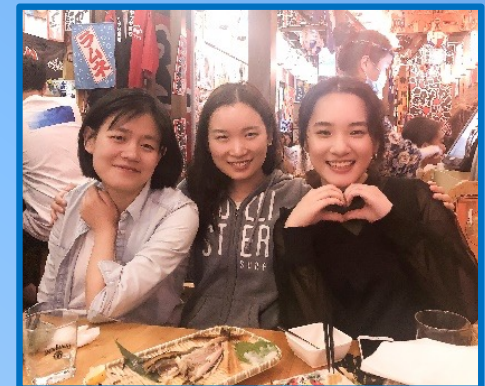
- For More Information:

- ❖ Website: <https://arts.columbia.edu/theatre>
- ❖ Email: [SOAadmissions@columbia.edu](mailto:SOAadmissions@columbia.edu)
- ❖ Phone: (212) 854-2134

# Alumni

## a selection of alumni accomplishments

- Kendra Bator (General Manager): Mirvish Productions
- Jeremy Blocker (Head of Live Creative Producing): Audible
- Susan Booth (Associate Professor): Eastern Michigan University
- Thom Clay (Director of Theatre Management): Nederlander Organization
- Beth Dembrow (General Manager): MCC Theatre
- Kelvin Dinkins (Executive Director): American Repertory Theatre
- Andy Donald (Assoc Artistic Director): American Conservatory Theatre
- Steve Dow (Deputy Director): Marin County Dept of Cultural Services
- Dave Ehle (Company Manager): *Redwood The Musical, Come From Away*
- Jamie Forshaw (Executive Producer): MWM Live / Madison Wells Media
- Temple Gill (Director of Public Affairs): Huntington Theatre
- Jovan Hannah (Assoc GM): 321 Productions, *Death Becomes Her*
- Jill Jefferson (Director, Acquisition Marketing): New York City Ballet
- Jessica Jenen (Producer): *Parade; Into the Woods; Gutenberg The Musical!*
- Brandon Kahn (General Manager): Alliance Theatre
- Danielle Karliner Naish (General Manager): RCI Theatricals
- Kappy Kilburn (Executive Director): Human Race Theatre
- Anah Klate (Audience Services Manager): Irish Arts Center
- Allie Lalonde (Director of Development): New York Theatre Workshop
- Congzhou Li (President): Beijing ATW Culture Media Co.
- Eric Louie (Artistic Producing Director): La Jolla Playhouse
- Hal Luftig (Producer): *Kinky Boots; American Utopia; Here Lies Love*
- Anthony McDonald (Executive Director): Shubert Theatre, New Haven
- Stacey McMath (Senior Consultant): Webb Management
- David Manella (Associate): Loeb & Loeb LLP
- Adam Miller (General Manager): TT Partners, *The Book of Mormon, Chess*
- Faye Rosenbaum (Dir of Business Continuity): Martha Graham Dance Co.
- Christina Selby (VP of Production & Touring): Nederlander Organization
- Stephen Sosnowski (Managing Director): SpotCo
- Michael Stotts (Managing Director): Paper Mill Playhouse
- Thomas Swayne (Executive Producer, North America): Sonia Friedman Productions
- Halla Tryggvadottir (Director of Marketing & Audience Development): Lincoln Center for the Performing Arts
- Jessica White (Business Affairs & Legal Counsel): Disney Theatrical Group
- Barbara Whitman (Producer): *Good Night, Oscar, A Strange Loop, Fun Home*



## Class of 2015 at Graduation



## Class of 2018 with Professors Robert Fried and Karen Kowgios *Hamilton* Opening Night in Chicago



Thank you for joining us!

Any Questions?

Steven

[sec11@columbia.edu](mailto:sec11@columbia.edu)

Tory

[vb12@columbia.edu](mailto:vb12@columbia.edu)